

## DAIGH COMPANY JOB STORIES #26a. Tennessee Basement Excavation

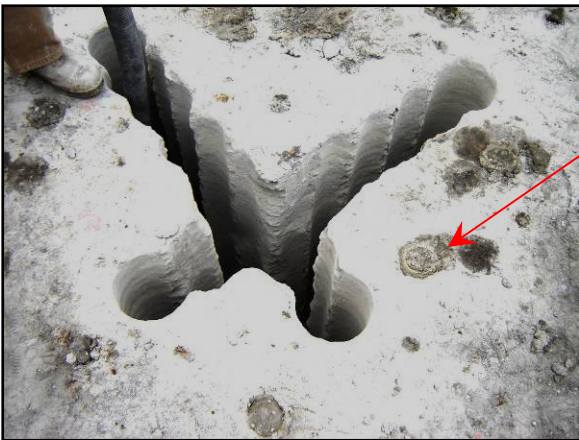
Basement Excavation: Limestone: Area was about 42 x 55 with 5 ft of rock to be excavated. Site contractor had used 5000# hammer for 40 hours and got 1.5 ft deep in a 30 x 5 ft wide area. Basement was within 10-15 feet of existing home. Since there were no free faces a crossed slot was drilled in the rock to create a breaking point and then the slot was extended. Hole diameter was 2.5", a presplit type pattern was drilled on the perimeter to shear the sides.



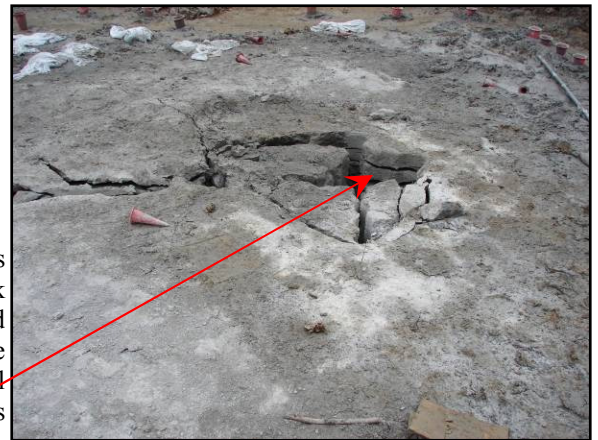
Area to be excavated. 42ft x55ft x5ft solid limestone



Drilling 2.5" holes with a track drill



Slot drilled to create a face. Note Da-mite already setting in holes



Da-mite has cracked rock and collapsed slot. Notice horizontal laminations

More than majority of limestone was dug with an excavator



Note Horizontal Fracturing

Project in final stages. Note clean straight walls from "pre-split and how rock was broken into "chunks"

